

Self-evaluation Summary Dashboard

Produce custom dashboards
at fftaspire.org

BBG Academy

LA Kirklees DFE 3824045 Produced February 2022

Reports

- Overview
- Attainment & Progress
- Pupil groups
- Subjects
- Disadvantaged pupils
- Scatterplot
- Context

What it tells you

- What are the strengths and weaknesses of your school?
- How does attainment and pupil progress at your school compare to the national average?
- How are you performing in different subjects?
- Do you have any under-performing groups of pupils?
- How might the context of your school affect performance?
- How does pupil attendance compare to the national average?

About the data shown



Filters

No filters chosen (all pupils included)
You can use filters to view a subset of pupils



Indicators

Attainment / Progress 8 (Overall)
% English & Maths (Grade 4+)

2021 self-evaluation reports have been calculated using the result from the Centre Assessed Grades in line with the latest government guidance provided by schools as part of the FFT Secondary Results Service. [?](#)

BBG Academy

2021 KS4

Overview

KS4 Attainment 2021 · Actual results

167 pupils

Attainment 8 (Overall)

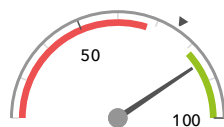
5.2



In line with the national average (5.2) ◀

% English & Maths (Grade 4+)

85%+



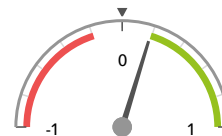
Significantly above the national average (75%) ◀

KS4 Progress 2021 · Value Added

166 matched pupils

Progress 8 (Overall)

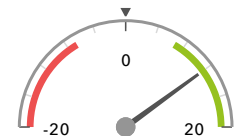
+0.19+↓



Significantly above the national average (0) ◀

% English & Maths (Grade 4+)

+12%+



Significantly above the national average (0%) ◀

KS4 higher and lower performing pupil groups 2021

Minimum group size: 10

	Higher performing	Lower performing
Overall achievement pupil progress	Lower attainers (54) Not FSM (in last 6 years) (138)+ Not FSM (139)+↓	FSM (27) FSM (in last 6 years) (28)
English pupil progress	SEN Support (21) Lower attainers (54) Not FSM (139)	FSM (27) FSM (in last 6 years) (28) Higher attainers (42) ↓
Mathematics pupil progress	Middle attainers (70)+ Female (83)+ Not FSM (139)+	
Subjects pupil progress	Business Studies:Single GCSE (19)+ Religious Studies GCSE (17) Art & Design GCSE (31)+ Mathematics GCSE (166)+ Science Double Awd GCSE (159)+	Psychology GCSE (18) Travel & Tourism Non-GCSE (43) Physical Education/Sport Studies GCSE (32)

2021 self-evaluation reports have been calculated using the result from the Centre Assessed Grades in line with the latest government guidance provided by schools as part of the FFT Secondary Results Service. [?](#)

BBG Academy

2021 KS4

Attainment & progress

KS4 Attainment 2021

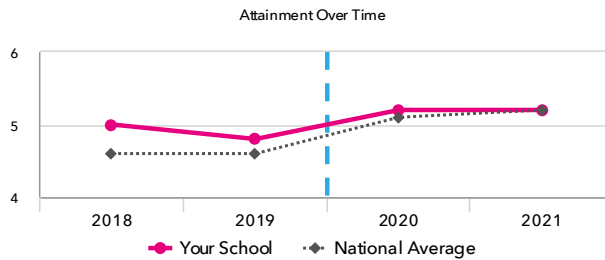
167 pupils

Attainment 8 (Overall)

5.2



In line with the national average (5.2)



KS4 Progress 2021

166 matched pupils

Progress 8 (Overall)

+0.19 + ↓



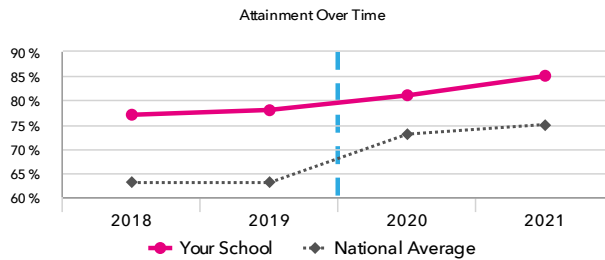
Significantly above the national average (0)

% English & Maths (Grade 4+)

+12% +



Significantly above the national average (0%)



% English & Maths (Grade 4+)

85% +



Significantly above the national average (75%)

KS4 performance summary

	Actual results			Pupil progress		
	2019	2020	2021	2019	2020	2021
Number of Pupils / % Matched	158	167	167	99%	98%	99%
Attainment / Progress 8 (Overall)	4.8	5.2 ↑	5.2	+0.24 +	+0.42 +	+0.19 + ↓
Attainment / Progress 8 (English)	5.0 ↓	5.2	5.2	+0.14 ↓	+0.17	+0.01
Attainment / Progress 8 (Maths)	5.1 +	5.4 +	5.5 +	+0.73 +	+0.80 +	+0.65 +
Attainment / Progress 8 (Ebacc)	4.5	5.3 ↑	5.3	+0.23 ↓	+0.67 + ↑	+0.40 + ↓
Attainment / Progress 8 (Open)	4.6	5.1 ↑	4.9 -	-0.04	+0.09	-0.20 ↓
% English & Maths (Grade 4+)	78% +	81% +	85% +	+15% +	+12% +	+12% +
% English & Maths (Grade 5+)	54% +	57%	63% +	+14% +	+13% +	+12% +
% Ebacc (Grade 4+)	9% -	59% + ↑	61% +	-13% -	+34% + ↑	+35% +
% Ebacc (Grade 5+)	6% -	39% + ↑	38% +	-8% -	+23% + ↑	+20% +
% 5+ GCSEs (Grade 7+)	8% -	19% ↑	15% -	-5%	+3% ↑	-3%
Average entries per pupil	8.3	8.5 +	7.0 - ↓	+0.1	+0.3 +	-1.2 - ↓
Average entries per pupil (GCSE only)	8.2 +	8.5 +	6.7 - ↓	+0.7 +	+1.0 +	-0.8 - ↓
% Pupils taking 3 single sciences	34% +	31%	4% - ↓	+9% +	+9% +	-19% - ↓

2021 self-evaluation reports have been calculated using the result from the Centre Assessed Grades in line with the latest government guidance provided by schools as part of the FFT Secondary Results Service. [?](#)

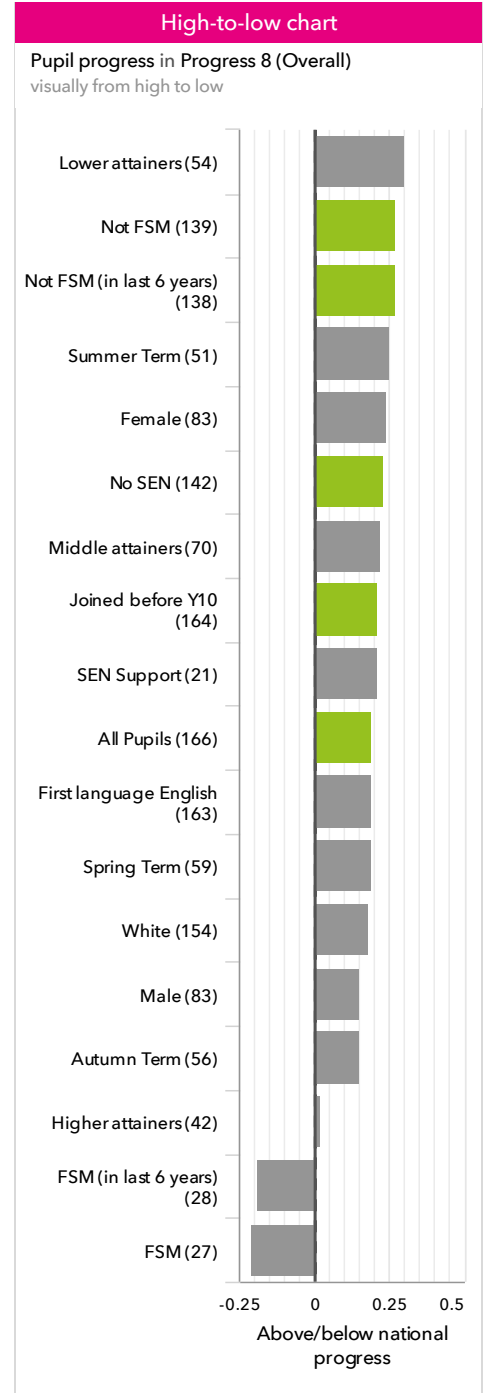
BBG Academy

2021 KS4

Pupil groups

KS4 Pupil groups performance 2021

			Actual results		Pupil progress	
	Pupils		Attainment 8 (Overall)	% English & Maths (Grade 4+)	Progress 8 (Overall)	% English & Maths (Grade 4+)
Summary	All Pupils	167	5.2	85% +	+0.19 + ↓	+12% +
Gender	Male	84	4.8	81%	+0.15	+12% +
	Female	83	5.6	89% +	+0.24	+11% +
FFT Prior Attainment	Higher attainers	42	6.7	100%	+0.02 ↓	+3%
	Middle attainers	70	5.3	91%	+0.22	+8%
	Lower attainers	54	3.9	65% +	+0.30	+23% +
Pupil Premium	FSM (in last 6 years)	28	4.3	61%	-0.19	-4%
	Not FSM (in last 6 years)	139	5.4	90% +	+0.27 +	+15% +
FSM	FSM	27	4.3	59%	-0.21	-6%
	Not FSM	140	5.4	90% +	+0.27 + ↓	+15% +
Term of Birth	Autumn Term	57	5.6	88%	+0.15	+6%
	Spring Term	59	4.9	83%	+0.19	+15% +
	Summer Term	51	5.1	84%	+0.25	+15% +
SEN Group	SEN Support	21	4.5	76% +	+0.21	+23% +
	EHC Plan	3	1.2	0%	-1.62	-20%
	No SEN	143	5.4	88% +	+0.23 + ↓	+11% +
EAL	First language not English	3	3.9	67%	+0.22	+20%
	First language English	164	5.2	85% +	+0.19	+12% +
Mobility	Joined in Y10 or Y11	2	4.2	50%	-0.94	-36%
	Joined before Y10	165	5.2	85% +	+0.21 +	+12% +
Ethnicity	White	155	5.2	85% +	+0.18 ↓	+11% +
	Black Caribbean	3	5.2	100%	+0.42	+35%
	Black African	1	6.2	100%	+1.29	+20%
	Pakistani	2	4.2	50%	+0.62	+8%
	Other Asian	3	4.1	67%	-0.17	+9%
	Any Other	1	6.4	100%	-0.40	+2%
	Unknown	2	4.5	100%	+0.51	+50%



2021 self-evaluation reports have been calculated using the result from the Centre Assessed Grades in line with the latest government guidance provided by schools as part of the FFT Secondary Results Service. ?

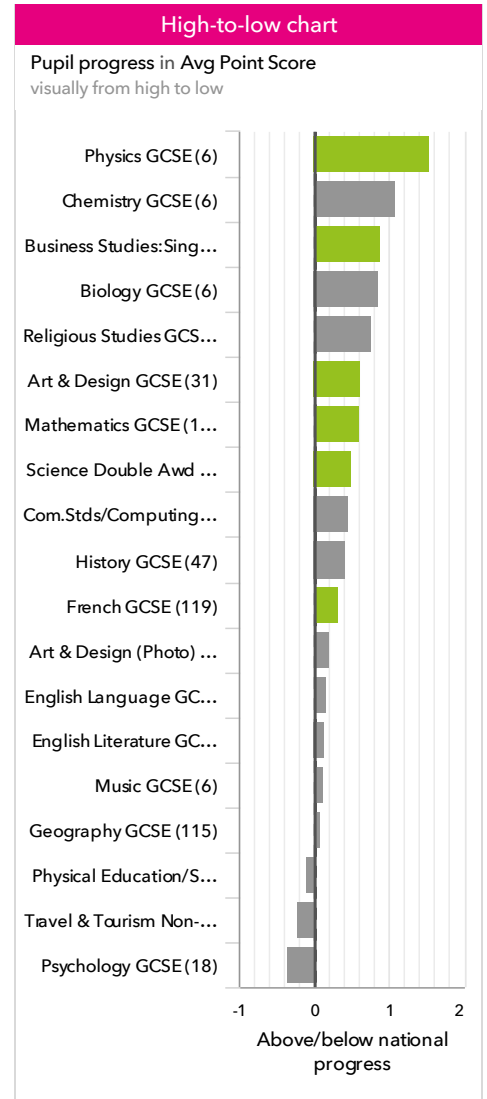
BBG Academy

2021 KS4

Subjects

KS4 subject performance 2021

			Actual results			Pupil progress		
Pupils			Avg Point Score	% Grade 4+	% Grade 7+	Avg Point Score	% Grade 4+	% Grade 7+
English and maths	English Language GCSE	166	5.2	89% + ↑	16% -	+0.17	+10% + ↑	-4%
	English Literature GCSE	163	5.0	89% + ↑	10% - ↓	+0.15	+11% +	-9% - ↓
	Mathematics GCSE	167	5.5 +	87% +	32%	+0.60 +	+9% +	+10% +
Ebacc Subjects	Biology GCSE	6	7.7 ↑	100%	100%	+0.87 ↑	+2%	+42%
	Chemistry GCSE	6	7.8 ↑	100%	100%	+1.09 ↑	+2%	+43%
	Com.Stds/Comp uting GCSE	20	5.3	85%	30%	+0.46	+12%	+8%
	French GCSE	120	5.2	96% + ↑	18% -	+0.33 +	+20% + ↑	-3%
	Geography GCSE	115	5.1	77%	27%	+0.08	+3%	+0%
	History GCSE	48	5.2	75%	27%	+0.42	+6%	+4%
	Physics GCSE	6	8.3 ↑	100%	100%	+1.53 + ↑	+2%	+41%
	Science Double Awd GCSE	160	5.1 + ↑	87% +	24% + ↑	+0.50 +	+13% +	+8% + ↑
Other High Value Subjects	Art & Design (Photo) GCSE	19	5.6	100%	5%	+0.21	+13%	-20%
	Art & Design GCSE	31	5.8	97%	23%	+0.63 +	+15% +	-0%
	Business Studies:Single GCSE	19	5.2	84%	16%	+0.89 +	+20%	+3%
	Music GCSE	6	5.8	83%	50%	+0.12	-1%	+12%
	Physical Education/Sport Studies GCSE	33	5.2	82%	21%	-0.10	+1%	-7%
	Psychology GCSE	18	5.4	78%	39%	-0.35	-5%	-2%
	Religious Studies GCSE	17	6.5 ↑	94%	53%	+0.76	+9%	+16%
	Travel & Tourism Non-GCSE	43	4.1	100% +	0% -	-0.22	+20% +	-13% -



2021 self-evaluation reports have been calculated using the result from the Centre Assessed Grades in line with the latest government guidance provided by schools as part of the FFT Secondary Results Service. [?](#)

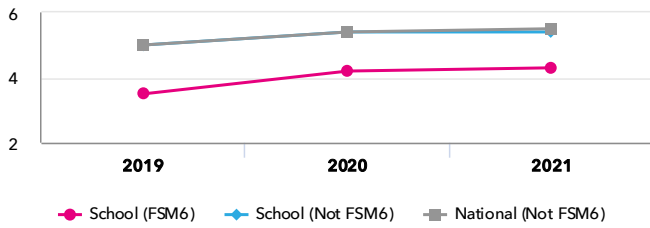
BBG Academy

2021 KS4

Disadvantaged pupils

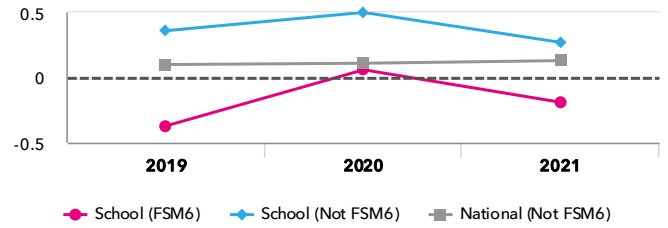
KS4 attainment for disadvantaged pupils 2021

Attainment 8 (Overall)

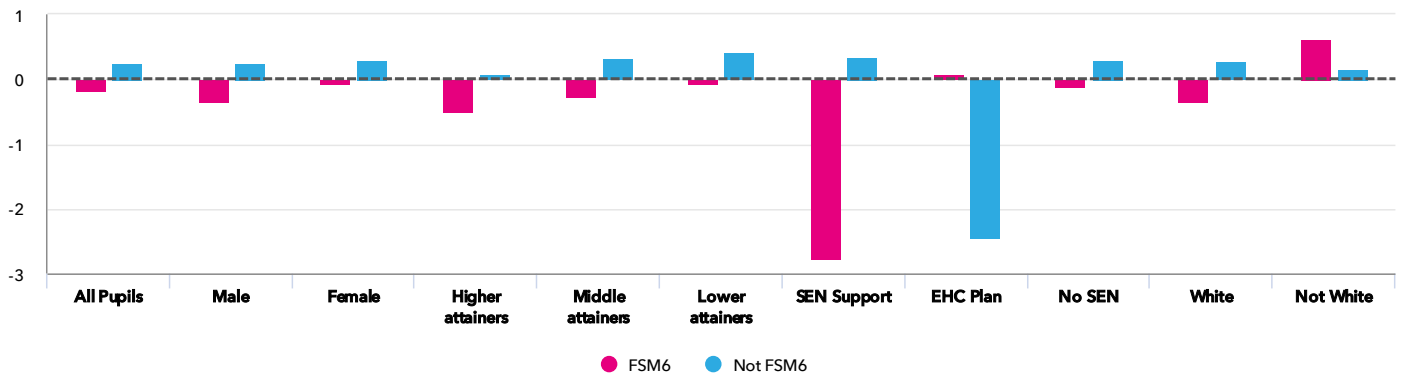


KS4 progress for disadvantaged pupils 2021

Progress 8 (Overall)



Progress gap Progress 8 (Overall)



Attainment & progress

Pupils	Attainment			Progress					
	FSM6	Not FSM6	Attainment 8 (Overall)			Progress 8 (Overall)			
			FSM6	Not FSM6	Gap	FSM6	Not FSM6	Gap	
Summary	All Pupils	28	139	4.3	5.4	-1.1	-0.19	0.27	-0.46
Gender	Male	14	70	3.6	5	-1.4	-0.34	0.25	-0.59
	Female	14	69	5	5.7	-0.7	-0.05	0.3	-0.35
FFT Prior Attainment	Higher attainers	3	39	5.4	6.8	-1.4	-0.5	0.05	-0.55
	Middle attainers	12	58	4.9	5.4	-0.5	-0.27	0.32	-0.59
	Lower attainers	13	41	3.4	4	-0.6	-0.05	0.42	-0.47
SEN Group	SEN Support	1	20	0.6	4.6	-4	-2.78	0.36	-3.14
	EHC Plan	1	2	2.2	0.7	1.5	0.05	-2.45	2.5
	No SEN	26	117	4.5	5.6	-1.1	-0.1	0.3	-0.4
Ethnic Group	White	24	131	4.3	5.4	-1.1	-0.33	0.28	-0.61
	Not White	4	8	4.1	5.2	-1.1	0.63	0.17	0.46

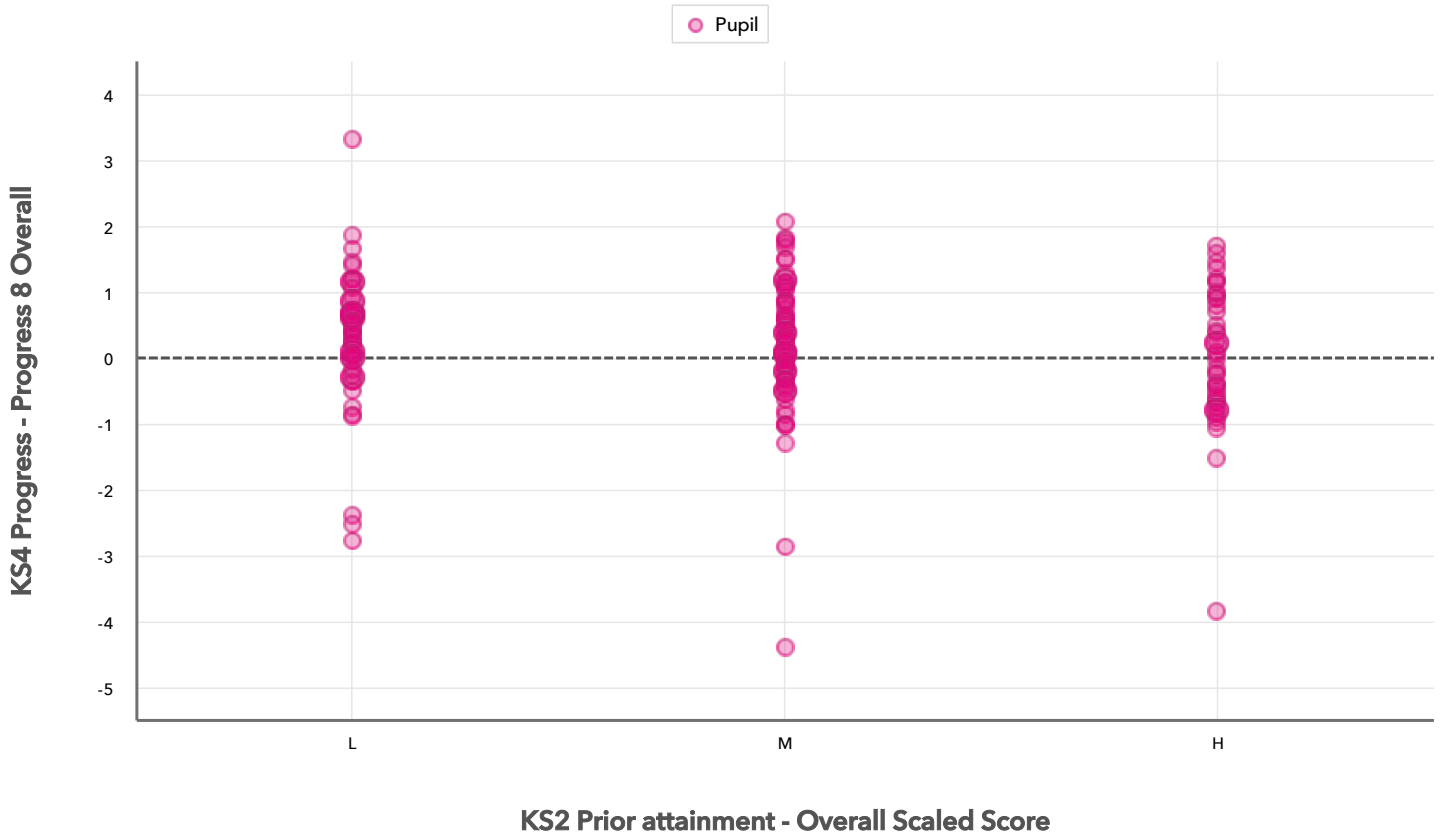
2021 self-evaluation reports have been calculated using the result from the Centre Assessed Grades in line with the latest government guidance provided by schools as part of the FFT Secondary Results Service. [?](#)

BBG Academy

2021 KS4

Scatterplot

KS4 Pupil scatterplot 2021 167 pupils highlighted by All pupils ▼



Context data has been produced using the data supplied by schools as part of the FFT Secondary Results Service. ?

BBG Academy

2021 KS4

Context

Context · Year 11

		Pupils		Comparative profile 2020 / 2021		Absence during Key Stage 4		Persistent absence during Key Stage 4	
		School	School	National	School	National	School	National	
Summary	All Pupils	167	100%	100%	-	-	-	-	
Gender	Male	84	50%	51%	-	-	-	-	
	Female	83	50%	49%	-	-	-	-	
FFT Prior Attainment	Higher attainers	42	25%	33%	-	-	-	-	
	Middle attainers	70	42%	33%	-	-	-	-	
	Lower attainers	54	32%	29%	-	-	-	-	
Pupil Premium	FSM (in last 6 years)	28	17%	23%	-	-	-	-	
	Not FSM (in last 6 years)	139	83%	77%	-	-	-	-	
FSM	FSM	27	16%	18%	-	-	-	-	
	Not FSM	140	84%	81%	-	-	-	-	
Term of Birth	Autumn Term	57	34%	34%	-	-	-	-	
	Spring Term	59	35%	32%	-	-	-	-	
	Summer Term	51	31%	34%	-	-	-	-	
SEN Group	SEN Support	21	13%	11%	-	-	-	-	
	EHC Plan	3	2%	2%	-	-	-	-	
	No SEN	143	86%	86%	-	-	-	-	
EAL	First language not English	3	2%	16%	-	-	-	-	
	First language English	164	98%	82%	-	-	-	-	
Mobility	Joined in Y10 or Y11	2	1%	3%	-	-	-	-	
	Joined before Y10	165	99%	97%	-	-	-	-	
Ethnicity	White	155	93%	73%	-	-	-	-	
	Black Caribbean	3	2%	3%	-	-	-	-	
	Black African	1	1%	5%	-	-	-	-	
	Pakistani	2	1%	4%	-	-	-	-	
	Other Asian	3	2%	3%	-	-	-	-	
	Any Other	1	1%	4%	-	-	-	-	
	Unknown	2	1%	1%	-	-	-	-	